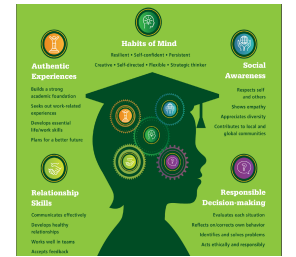




# Howell Public Schools Common Elementary Behavior Matrix



	Classrooms & Media Center	Hallways (& Stairs)	Bathrooms	Cafeteria	Playground	Arrival & Dismissal	Assemblies & Field Trips
<b>C</b> <b>Compassionate</b> Feeling and Showing Care	Be kind to others in ALL areas						
	Be open minded Honor differences See the best in others Help those around you Wait your turn	Hold the door for the person behind you Wait your turn Maintain personal space	Give others privacy	Invite others to sit with you Include everyone	Invite and allow others to join you	Kind and appropriate conversations	Help those around you
<b>A</b> <b>Accountable</b> Responsible and Safe	Keep hands, feet, and objects to yourself in ALL areas Report problems to adults in ALL areas						
	Use walking feet Use materials as directed Follow directions & rules Be ready to learn	Use walking feet Keep hallways & stairs clean	Wash your hands Use soap and paper products correctly Return to your classroom quickly	Stay in your seat Raise your hand for help Clean up after yourself Use food and drinks appropriately	Ask for permission to go inside Line up quickly Clean up Stay within the playground boundaries	Listen to adults Be in your appropriate area	Represent your school well Stay with your group
<b>R</b> <b>Respectful</b> Politeness and acceptance	Use appropriate language in ALL areas Follow Adult Directions in ALL areas Treat others how you want to be treated						
	Appropriate voice level Listen to others ideas Keep your classroom clean Be prepared and on time	Quiet voice Close lockers quietly Be aware of other's learning	Quiet voice Flush the toilet when finished	Use kind words and manners	Use equipment properly	Appropriate voice level Respect others property	Be a respectful audience
<b>E</b> <b>Engaged</b> Showing investment and paying attention	Give your best effort in ALL areas						
	Be and active learner Ask for help when needed Use your technology for intended purposes	Face Forward Stay in line Go directly to your location	Go, flush, wash, leave	Focus on eating your food	Be a good sport Follow game rules	Stay in your seat Go directly to your location	Be an intentional listener Actively participate